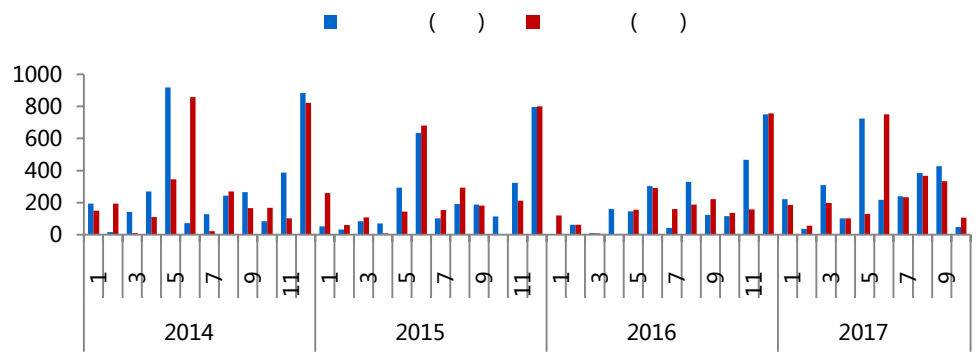






2014	166	22134.5	3601.15	150	20656.29	3214.64	392.06	8098583	2519	2.29
2015	161	18382.39	2876.93	153	17579.98	2891.15	371.12	6524238	2257	1.6
2016	118	19097.03	2505.99	109	15405.72	2252.18	460.21	7089826	3148	27.39
2017 1-10	130	19063.62	2739.72							



2017 10	3	310.24	2	445.79
2017 9	15	2782.07	15	2097.06
2016 10	9	774.73	6	860.2
10				
10				



✓ — —

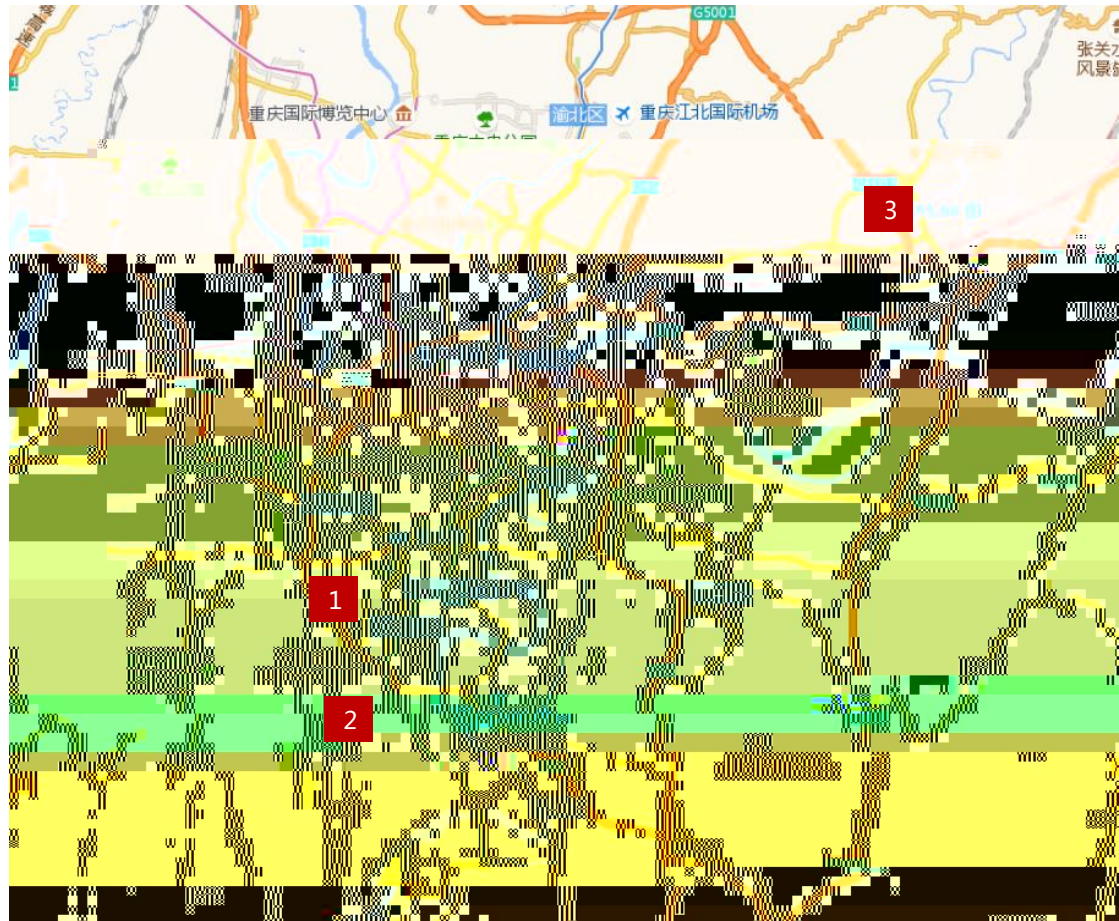
/m<sup>2</sup>

		( )	( )	( / )	( )	( / )	(%)
2014	150	20656.29	3214.64	392.06	8098583	2519	2.29
2015	153	17579.98	2891.15	371.12	6524238	2257	1.6
2016	109	15405.72	2252.18	460.21	7089826	3148	27.39
2017 1-10	120	17261.94	2460.63	657.99	11358235	4616	20.84

2017 10	45.24	4304	0
2017 9	178.60	5349	8.95
2016 10	24.23	1792	11.28
10			
10			

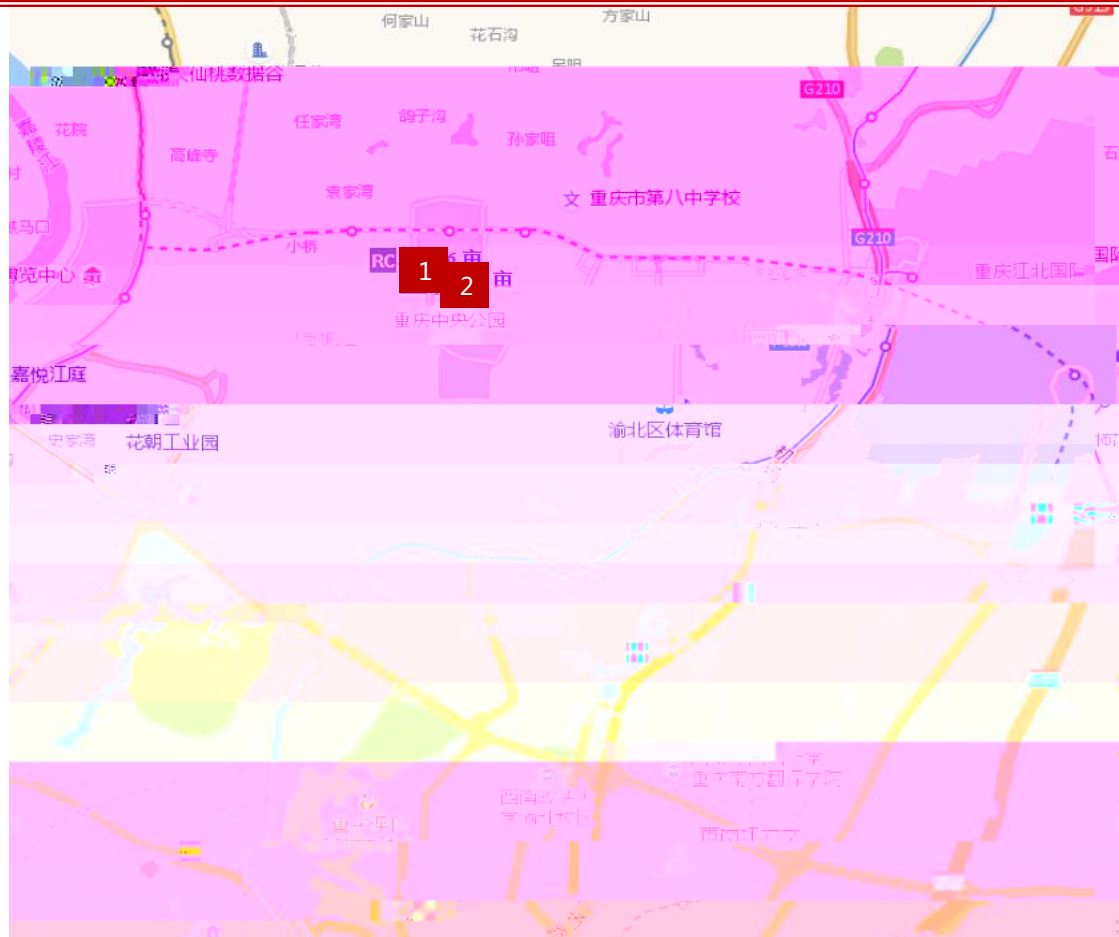


	12793 ( )
	3.5
	12793 ( )
	136794( )
	2.54
	5300( / )
	57241.6( )
	1.5
	800( / )





	218505.2 ( )
	3.4
	4230 ( )

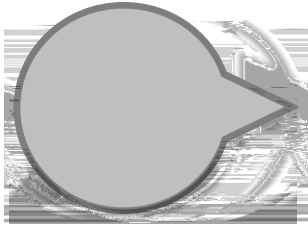




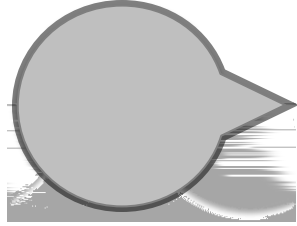
## 重庆主城区重点房企土地储备量

排名	房企名称	可建数量(万方)	土地储备量(万方)	主要储备地块名称
1	融创地产	836	836	融创项目、同德城、融创青邑院、融创江志项目、其他收购项目
2	龙湖地产	507	507	龙湖舜山院、龙湖九里晴川、翡翠国际、龙湖·枫景湾、龙湖·枫树湾、龙湖·枫林绿洲、中央公园北、中央公园东、其他收购项目
3	恒大地产	501	501	恒大御城、恒大御府、恒大御府、恒大御府、其他收购项目
4	万科地产	475	475	万科·翡翠国际、万科·翡翠国际、万科·翡翠国际、万科·翡翠国际
5	华宇地产	453	453	华宇·华宇国际、华宇·华宇国际、华宇·华宇国际
6	合能地产	445	445	合能·合能国际、合能·合能国际、合能·合能国际
7	合能地产	375	375	合能·合能国际、合能·合能国际、合能·合能国际
8	交中地产	366	366	交中·交中国际、交中·交中国际、交中·交中国际
9	积善德隆	285	285	积善·积善国际、积善·积善国际、积善·积善国际
10	东原地产	225	225	东原·东原国际、东原·东原国际、东原·东原国际

注：企业土地储备量指企业拿地储备量



- ◆
- ◆



- ◆
- ◆



- ◆
- ◆
- ◆



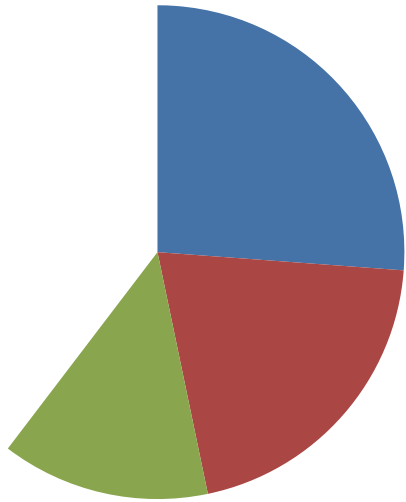
2017	10	141.01	233.11	10050
2017	9	158.63	215.27	10005
2016	10	226.24	250.17	7578
10				
10				

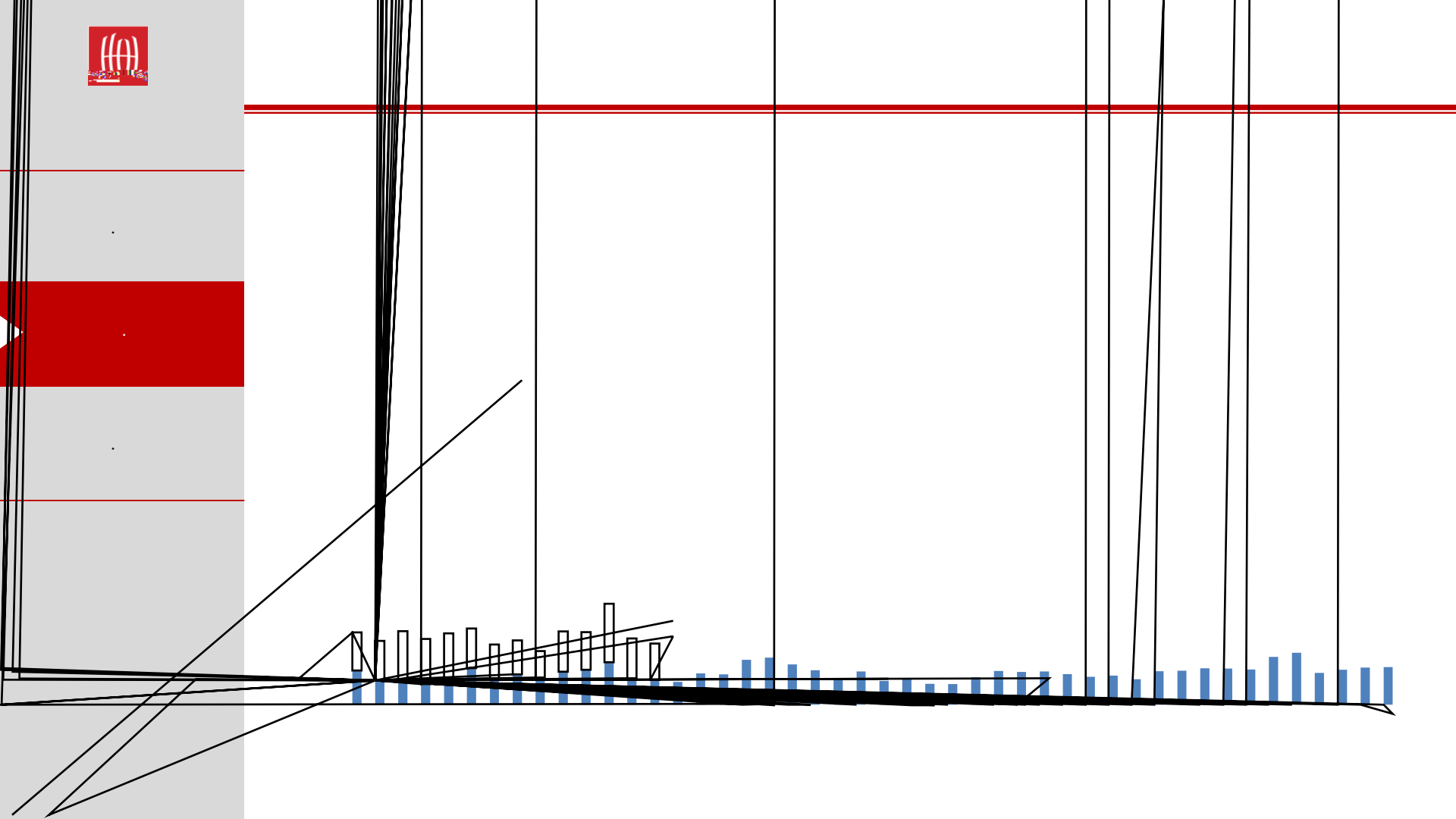




- ✓ ---
- ✓ ---
- ✓ ---
- ✓ ---









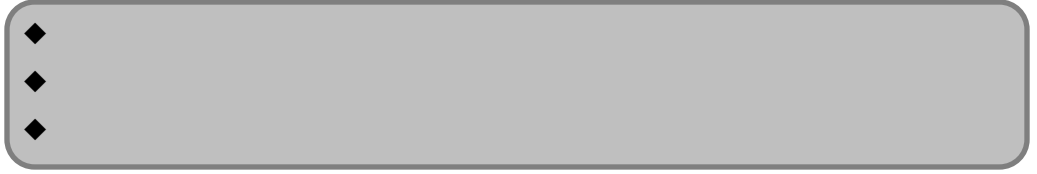
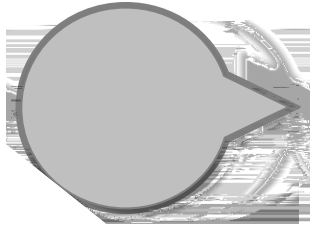






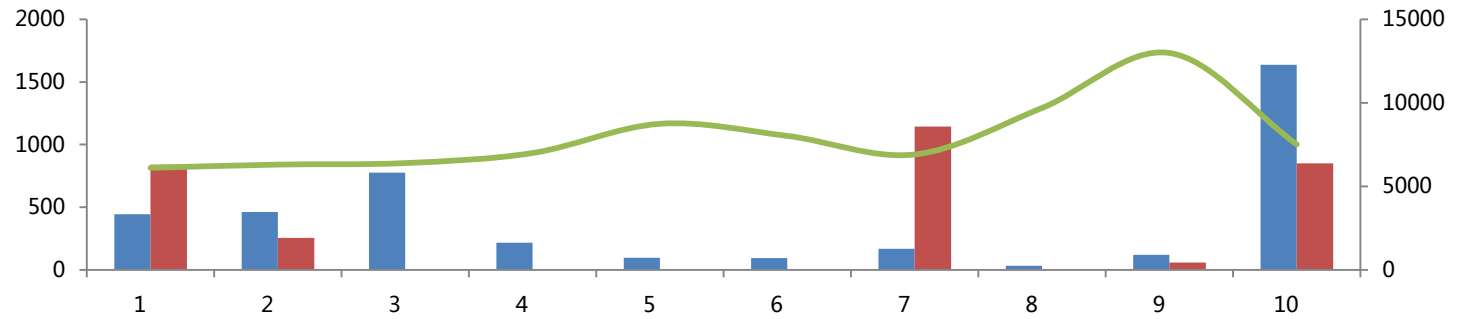
- ✓ — —
- ✓ — —

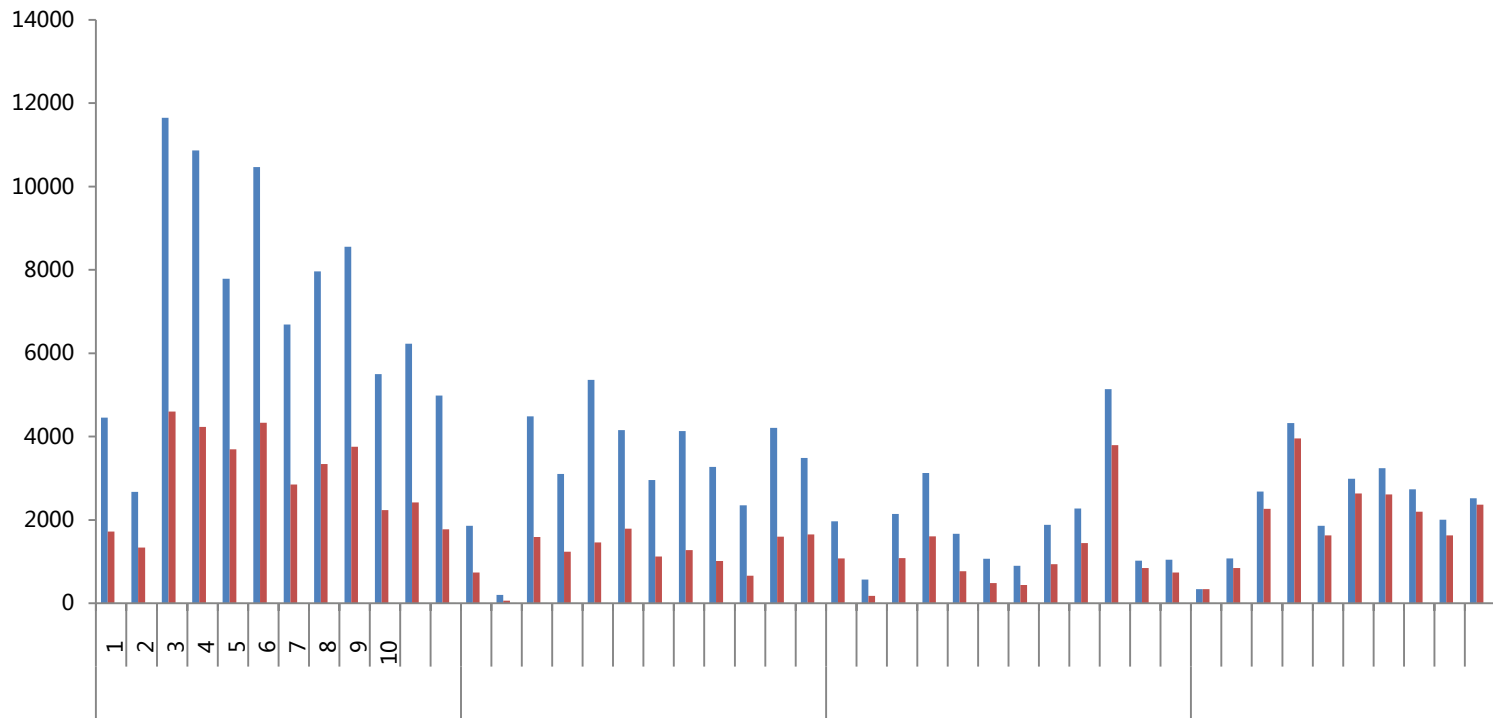
















✓



!







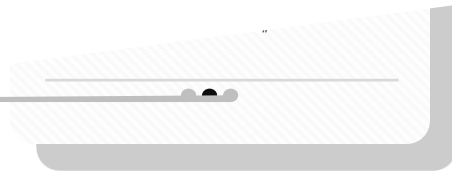
"



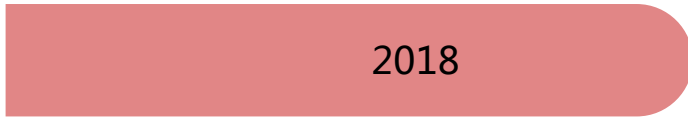
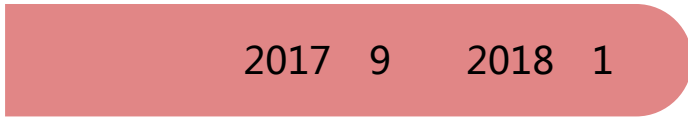
"



"

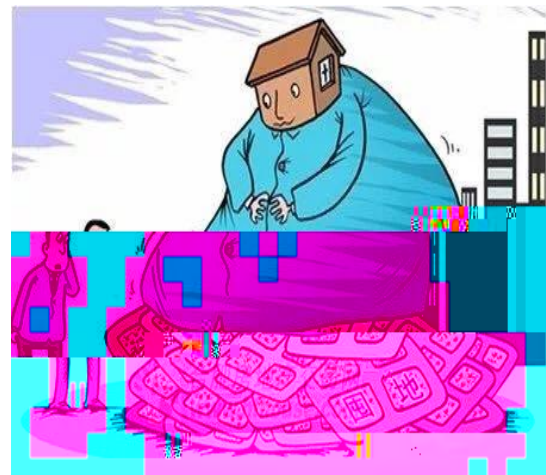


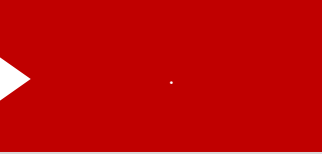
"





2016





- ◆
- ◆



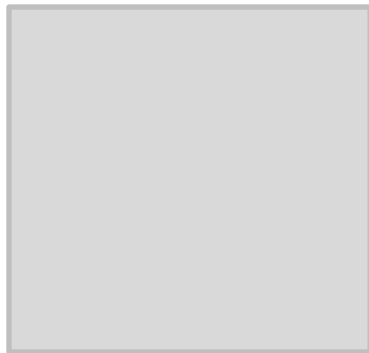
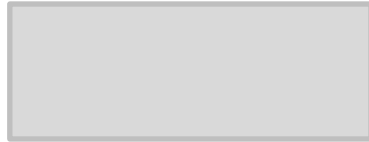
"

"



"

"

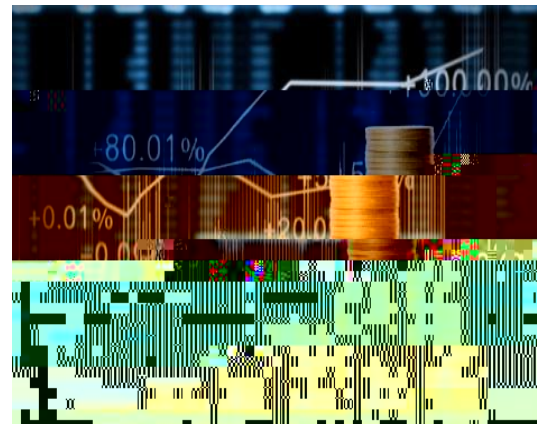


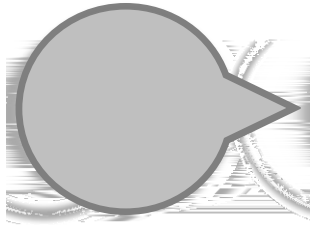


- ◆
- ◆ 1 40%
- ◆ 2 40%

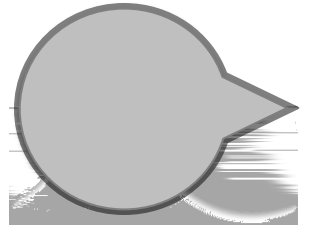


- ◆
- ◆
- ◆





- ◆
- ◆
- ◆
- ◆

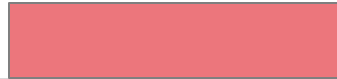


- ◆
- ◆



✓ --- 3

✓ ---



✓ ---

✓ ---



